

# **OpenText™ Output Transformation CE 24.2**

## **Release Notes**

Product Released: 2024-04-30



# 1 Introduction

These Release Notes provide an overview of Output Transformation 24.2, including new features, delivery information, and supported platforms.

OpenText recommends that you read these Release Notes in conjunction with the documentation included with the software package. If any conflicts exist, the Release Notes supersede the other documentation.

We also recommend that you check OpenText [My Support](#) for any patches or documentation updates that may have been posted after the initial release of this product.

## 1.1 Release Notes revision history

Revision date	Sections revised	Description of revisions
2024-04-30	First release.	All new content.

## 2 About Output Transformation 24.2

This section provides an overview of Output Transformation 24.2.

OpenText Output Transformation provides a suite of software products aimed at enhancing customer interactions within organizations. These solutions are relied upon by a wide range of global enterprises, including those in financial services, insurance, telecommunications, healthcare, and government sectors. Leveraging advanced technology, these tools seamlessly integrate with existing systems, improving the efficiency of how enterprises manage personalized, high-volume documents across diverse communication channels.

The Output Transformation suite of products is comprised of:

### 1. OpenText Output Transformation Designer

- This on-premise user interface empowers users to design, create, and deploy Output Transformation Projects. It offers a user-friendly environment for designing and managing document transformation processes, enabling users to define rules, automate tasks, and ensure the seamless flow of documents throughout the organization.

### 2. OpenText Output Transformation Server:

- This core component captures content, runs process flows, and performs transformations. It can process a wide range of structured and semi-structured documents, optimizing the storage and retrieval of high-volume data. Output Transformation Server efficiently handles tasks such as archival, remote communication with third-party systems, and creating accessible document formats.

### 3. OpenText Embedded Output Transformation Engine:

- This embeddable transformation engine seamlessly integrates into Java applications, providing the capability transform, repurpose, and extract data from diverse semi-structured report and print output formats. It seamlessly supports various formats, including AFP, PCL, Metacode/DJDE, PostScript, Line data, Image, and PDF. It is designed to facilitate the conversion of documents into formats that are suited for archiving in addition to web and mobile presentment. It ensures efficient content extraction from documents and facilitates index creation for archiving purposes.

#### **4. OpenText Automated Output Accessibility:**

- This add-on component enhances Output Transformation Server and the Embedded Output Transformation Engine by enabling the generation of PDF/UA-compliant output. It ensures that documents are transformed and made accessible for individuals with disabilities. This feature aligns with accessibility standards, ensuring compliance with regulations.

#### **5. OpenText Embedded Data Transformation Engine:**

- This embeddable transformation engine is designed for Java applications, specializing in transforming and repurposing structured data. It caters to business-to-business (B2B) applications and system integration by facilitating data transformation and enhancing data exchange between various systems and formats. Supported formats encompass various structured data types, including XML, CSV, HL7, EDI, and more.

#### **6. OpenText Document Accessibility:**

- Document Accessibility is a comprehensive web-based solution designed to make PDF documents more inclusive and compliance-friendly. It empowers organizations to enhance the accessibility of their documents, ensuring they adhere to the latest accessibility standards and cater to individuals with disabilities. With Document Accessibility, users can efficiently improve documents by leveraging auto-detection and remediation features, simplifying tasks such as tag editing, adding alternative text, and enhancing document structures. By using OpenText Document Accessibility, organizations can make their PDFs more user-friendly and legally compliant, expanding their impact and accessibility to a broader audience.

#### **7. OpenText Output Transformation for InfoArchive:**

- This component serves as an add-on for InfoArchive, accepting and converting various print stream input formats. It archives them as native Advanced Function Presentation (AFP) print stream or Stacked PDF content within InfoArchive. It also enables dynamic transformations into other formats upon retrieval, optimizing data storage and accessibility.

#### **8. OpenText Output Transformation for Documentum:**

- Similar to the InfoArchive component, this add-on works with Documentum, accepting multiple print stream input formats. It archives them efficiently as native AFP print

stream or Stacked PDF content within Documentum and offers dynamic transformations into other formats upon retrieval.

## 9. OpenText Output Transformation for AppEnhancer:

- This add-on complements AppEnhancer by capturing print stream content from diverse sources, indexing, and processing the content, and loading it into AppEnhancer for archival and management. It streamlines data processing, indexing, and archival, ensuring that AppEnhancer efficiently stores and manages information.

These comprehensive solutions empower organizations to deliver an enhanced customer experience and streamline their document transformation processes effectively.

## 2.1 New features

Output Transformation 24.2 includes the following new features.

### 2.1.1 Output Transformation Designer

#### 2.1.1.1 *Linedata Parser Wizard*

The Linedata Parser Wizard in Output Transformation Designer simplifies project creation, which reduces the time and effort required by eliminating the manual configuration of parser parameters. This feature is particularly beneficial for organizations that frequently set up new projects and value efficiency.

The Linedata parser wizard is accessible by either double-clicking on the Linedata parser within your Embedded Output Transformation Engine project or right-clicking on it and selecting “*Open.*”

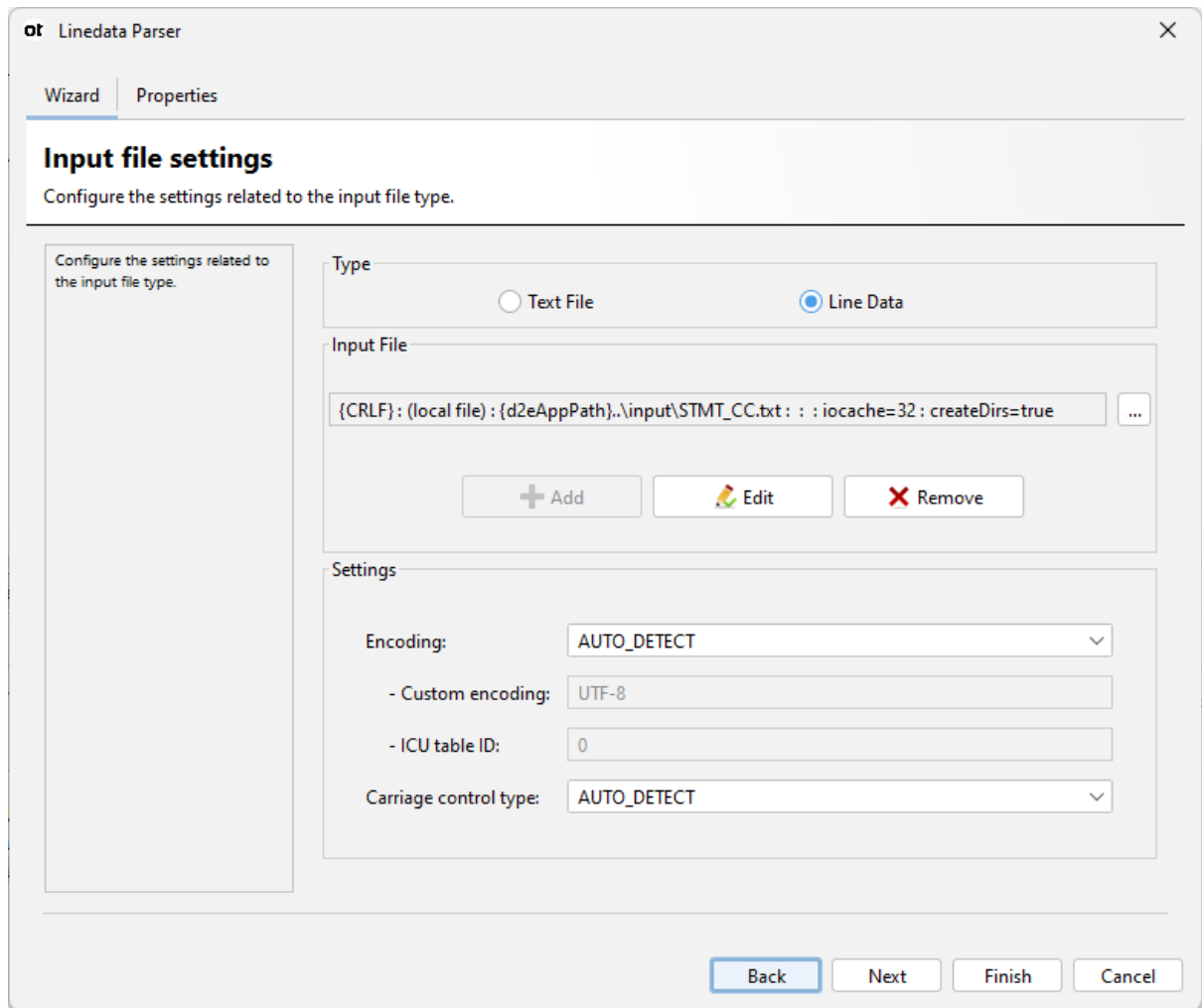


Figure 1: A screenshot of the Linedata Parser wizard in Output Transformation Designer with form fields to configure the input file settings.

## 2.1.2 Output Transformation Server

- Added support for PostgreSQL 14
- Added Output Transformation Server and AppEnhancer version information to the Output Transformation Server debug log and the AELoader audit log.
- Added DocumentOptions > FailureThreshold option to the AELoader that specifies the number of failures the loader can encounter before it aborts and fails.
- Added process to insert/update rows in a database using persistent storage.
- Added audit logging to debug log for service-related operations in Output Transformation Server Manager.
- Added a service start order to control the service startup order. The order is defined in each service type and is not user-configurable.
- Added a new Get Files component that can populate a MultiXDoc based on the specified pattern.

- Added a flag to enable CORS when calling the Output Transformation Server REST API. Users can add `ots.cors.enabled=true|false` to their application server properties file (in the settings folder) before starting their application server.
- Added functionality to allow the AELoader to utilize XDocs for index and data files.
- Updated CMIS client JAR files to the latest version.

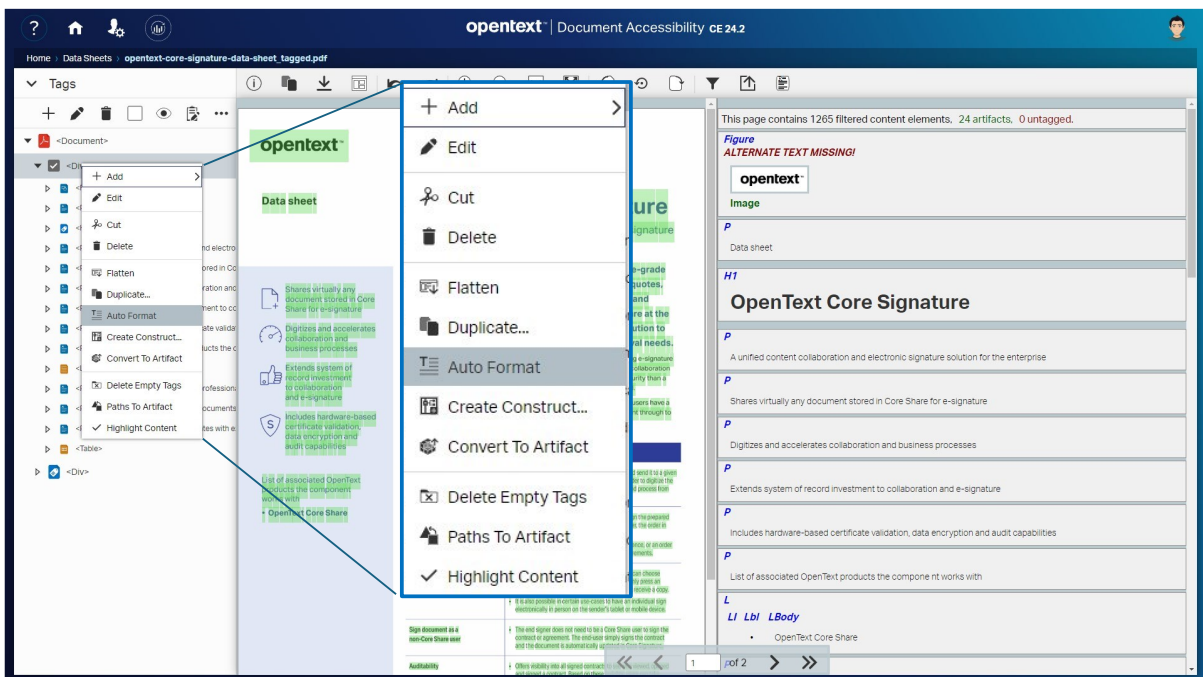
### 2.1.3 Output Transformation Designer

- Enhanced process flow execution dialogue box in Output Transformation Designer to show all possible inputs to provide data.
- Enhanced File Event to optionally populate a job variable with the file's last modified time.
- Added additional buttons to move a file directly to the top or bottom of the list in the File Definition List dialog box, where applicable.
- Added a feature to find a set of files in the File System view in Output Transformation Designer.
- Added a feature to find a component based on name or description when creating a new component in Output Transformation Designer.

### 2.1.4 Embedded Output Transformation Engine

### 2.1.5 Document Accessibility

- Enhanced the Auto Format option in Document Accessibility to allow users to fix spacing issues in all nested tag nodes instead of just a single tag node.



## 2.2 Discontinued and deprecated features

The following features have been discontinued in this release:

- Removed JAVA\_OPTS variable from setenv.bat and setenv.sh for Tomcat.
- Removed support for PostgreSQL 13

## 3 Downloads

Downloads for Output Transformation are available on [My Support](#).

The software for Output Transformation includes:

### base folder

- OTS\_BASE.zip

This zip file contains the base installation required to run, install, and update the Output Transformation Suite products. This file must be unzipped to the directory where you want to run the Output Transformation product(s). (i.e., C:\OpenText\OTS\24.2\). This location is now referred to as <OTS\_HOME>

### modules folder

- OTS\_Core\_<version\_number>.zip

This is the install module for the core set of libraries shared by all Output Transformation Suite products. It needs to reside in <OTS\_HOME>\modules.

- OTS\_OutputTransformationServer\_<version\_number>.zip

This is the install module for the Output Transformation Server. It needs to reside in <OTS\_HOME>\modules.

- OTS\_OutputTransformation\_<version\_number>.zip

This is the install module for the Output Transformation Engine. It needs to reside in <OTS\_HOME>\modules.

- OTS\_ArchiveNavigator\_<version\_number>.zip

This is the install module for Output Transformation Server Archive Navigator. It needs to reside in <OTS\_HOME>\modules.

- OTS\_DataTransformation\_<version\_number>.zip

This is the install module for Output Transformation Server Data Transformation. It needs to reside in <OTS\_HOME>\modules.

- OTS\_ebXMLMessaging\_<version\_number>.zip

This is the install module for the Output Transformation Server ebXML messaging service. It needs to reside in <OTS\_HOME>\modules.

- `OTS_ml-dl4j_<version_number>.zip`  
This module contains the machine learning libraries and interfaces for the AutoDetect feature. It requires `OTS_DocumentAccessibility_<version_number>.zip` to be present. It needs to reside in `<OTS_HOME>\modules`.
- `OTS_DocumentAccessibility_<version_number>.zip`  
This is the install module for Document Accessibility. It needs to reside in `<OTS_HOME>\modules`.

### **subproducts folder**

- `EOTE-<version_number>.tar.gz`  
This is the server module for the Embedded Output Transformation Engine for Linux and UNIX systems. It needs to be untarred on the server you wish to deploy on.
- `EOTE-<version_number>.zip`  
This is the server module for the Embedded Output Transformation Engine for Windows systems. It needs to be unzipped on the server you wish to deploy on.
- `OTS-integration-icn-<version_number>.zip`  
This module contains the IBM Content Navigator plugin for Output Transformation Server. It needs to be unzipped and deployed according to the Output Transformation Server Installation Guide.
- `OTS-integration-odwek-<version_number>.zip`  
This module contains the IBM Content Manager OnDemand Web Enablement Kit (ODWEK) Generic Transform Interface plugin for Output Transformation Server. It needs to be unzipped and deployed according to the Output Transformation Server User Guide (Packaging and Deploying IBM Content Manager OnDemand Web Enablement Kit Generic Transform Interface).
- `OutputTransformation-for-InfoArchive-<version_number>.zip`  
This module contains the InfoArchive plugin for Output Transformation for InfoArchive for Linux and UNIX systems. It needs to be unzipped and deployed according to the Output Transformation for InfoArchive Installation Guide.
- `OutputTransformation-for-InfoArchive-<version_number>.tar.gz`  
This module contains the InfoArchive plugin for Output Transformation for InfoArchive. It needs to be unzipped and deployed according to the Output Transformation for InfoArchive Installation Guide.
- `OutputTransformation-for-Documentum-<version_number>.zip`  
This module contains the Documentum plugin for Output Transformation Server. It needs to be unzipped and deployed according to the README.txt file in this package.
- `OutputTransformation-for-Documentum-<version_number>.tar.gz`

This module contains the Documentum plugin for Output Transformation Server for Linux and UNIX systems. It needs to be unzipped and deployed according to the README.txt file in this package.

- Xenos-PDF-API-<version\_number>.zip

This module is the PDFMerge API, a java library for appending PDFs, extracting pages from PDF files, etc. It needs to be unzipped on the Embedded Output Transformation Engine's server.

## 4 Documentation

Documentation for Output Transformation is available on [My Support](#).

The documentation for Output Transformation includes:

- [Release Notes](#)
- [Output Transformation Server Guides](#)
- [Output Transformation Engine Guides](#)
- [Data Transformation Engine Guides](#)
- [Output Transformation Designer Guides](#)
- [Alternate Text Manager Guides](#)
- [Document Accessibility Guides](#)
- [Archive Navigator Guides](#)
- [Output Transformation for InfoArchive Guides](#)
- [Output Transformation Server ebXML Messaging Guides](#)
- [Output Transformation for Documentum Guides](#)

### 4.1 Related documentation

The following list contains supplemental product information about Output Transformation as well as documents that contain information about supporting or related products.

- [Output Transformation Documentation](#)
- [InfoArchive](#)
- [Documentum Platform](#)
- [OpenText Directory Services](#)

#### 4.1.1 Related videos

For additional video content, see the Output Transformation Videos page on [My Support](#).

## 5 Supported environments and compatibility

This section provides details about supported platforms, systems, and versions.

### 5.1 Supported systems

#### 5.1.1 Virtualization

The OpenText Output Transformation Suite of products does not specify support for virtualized operating systems because virtualization products provide transparency to the operating systems and the applications that run on them. Hence, these products should work in a virtualized infrastructure

just as they would in a non-virtualized environment. Therefore, support for issues in a virtualized and partitioned environment will be handled as any other support issue. This includes reproducing the issue on a virtualized or non-virtualized platform. OpenText reserves the right to request that customers recreate the issue in a non-virtualized environment if there is an indication that the issue might be unique to the virtualized infrastructure.

## 5.1.2 Java Virtual Machines

The OpenText Output Transformation products are native Java applications. They can work natively in both 32-bit environments using a 32-bit JVM and a 64-bit environment using a 64-bit JVM. Check with JRE and OS vendors and install all the necessary patches for their JRE and Operating System configuration.

## 5.1.3 Output Transformation Designer

### 5.1.3.1 Operating Systems

Output Transformation Designer supports the following operating systems:

Operating System	Version
Microsoft Windows	10 Professional 11 Professional Server 2019, 2022
Red Hat Enterprise Linux AS*	8.x, 9.x
SUSE Linux Enterprise Server*	15 SP3

\*When running Output Transformation Designer on a supported Linux or UNIX operating system, an XServer is required for the Graphical User Interface environment.

### 5.1.3.2 Java Virtual Machines

Output Transformation Designer supports the following Java Virtual Machines:

Java Virtual Machine	Version
Oracle	JDK 8, JVM 11 and JVM 17
OpenJDK	11 and 17

## 5.1.4 Output Transformation Server

### 5.1.4.1 Operating Systems

Output Transformation Server supports the following Operating Systems:

Operating System	Version
Microsoft Windows	10 Professional 11 Professional Server 2019, 2022
Red Hat Enterprise Linux AS	8.x, 9.x
SUSE Linux Enterprise Server	15 SP3
Oracle Solaris	11.3
IBM AIX	7.2

### 5.1.4.2 Java Virtual Machines

Output Transformation Server supports the following Java Virtual Machines:

#### Microsoft Windows, Oracle Solaris, Linux

Java Virtual Machine*	Version
Oracle	JDK 8, JVM 11 and JVM 17
OpenJDK	11, 17

#### IBM AIX

Java Virtual Machine	Version
IBM SDK, Java Technology Edition	Version 8

### 5.1.4.3 Application Servers

Applications Servers must be supported by the vendor on the Operating System where they are deployed. Therefore, check directly with the application server vendor to verify its support for the operating system.

For Application Servers that depend on a specific Java Virtual Machine, the default JVM packaged with the application server by the application server's vendor should be used.

<b>Application Server</b>	<b>Version</b>
Apache Tomcat	9
IBM WebSphere Application Server Liberty	24.x
JBoss Web Server	5.5

#### 5.1.4.4 Databases

The Output Transformation Server Configuration Manager supports the following databases:

<b>Database*</b>	<b>Version</b>	<b>JDBC Driver Supported</b>
Oracle Database Server	19c (12.2.0.3)	Oracle Thin JDBC driver
Microsoft SQL Server	2019, 2022	Microsoft JDBC Driver for SQL Server
PostgreSQL	14, 15	Not Applicable

\* The listed JDBC drivers are supported under the vendor's supported configurations (OS, JRE, etc.) Output Transformation Server's Configuration Manager works with any JDBC 2.0 Type 2, 3, and 4 compliant database drivers. The use of JDBC-ODBC bridge drivers is explicitly not recommended or supported.

#### 5.1.4.5 Browsers

The Document Accessibility, Output Transformation Server Manager, Alternate Text Manager, and Archive Navigator web applications support the following web browsers:

<b>Browser</b>	<b>Version</b>
Microsoft Edge	Current
Google Chrome	Current

Mozilla Firefox	Current
-----------------	---------

#### 5.1.4.6 Enterprise Content Management Systems

Output Transformation Server supports the following Content Management Systems and Archives:

ECM System	Version
OpenText InfoArchive	24.2
OpenText Documentum Platform	24.2
OpenText Archive Center	16.2
OpenText AppEnhancer	24.2
IBM Content Manager OnDemand (CMOD)	10.5
IBM FileNet P8	5.5.8
IBM Content Navigator (ICN)	3
CMIS-Enabled Systems	compliant with OASIS CMIS 1.0 specification

#### 5.1.4.7 Container Platforms

Output Transformation Server supports the following Container Platforms:

Container Platform	Version
Docker	24
Kubernetes	1.28
Helm	3.12

### 5.1.5 Embedded Output Transformation Engine

#### 5.1.5.1 Operating Systems

Embedded Output Transformation Engine supports the following operating systems:

<b>Operating System</b>	<b>Version</b>
Microsoft Windows	10 Professional 11 Professional Server 2019, 2022
Red Hat Enterprise Linux AS	8.x, 9.x
SUSE Linux Enterprise Server	15 SP3
Oracle Solaris	11.3
IBM AIX	7.2
IBM zSystem	2.2

#### 5.1.5.2 Java Virtual Machines

Embedded Output Transformation Engine server supports the following Java Virtual Machines

#### **Microsoft Windows, Oracle Solaris, Linux**

<b>Java Virtual Machine</b>	<b>Version</b>
Oracle	JDK 8, JVM 11 and JVM 17
OpenJDK	11, 17

#### **IBM AIX**

<b>Java Virtual Machine</b>	<b>Version</b>
IBM SDK, Java Technology Edition	8

### 5.1.6 Embedded Data Transformation Engine

#### 5.1.6.1 Operating Systems

Refer to [Output Transformation Server supported Operating Systems](#).

### 5.1.6.2 Java Virtual Machines

Refer to [Output Transformation Server supported Java Virtual Machines](#).

### 5.1.6.3 Application Servers

Refer to [Output Transformation Server supported Application Servers](#).

### 5.1.6.4 Databases

The Embedded Data Transformation Engine supports the following databases:

Database*	Version	JDBC Driver Supported
Oracle Database Server	19c (12.2.0.3)	Oracle Thin JDBC driver
Microsoft SQL Server	2019, 2022	Microsoft JDBC Driver for SQL Server
PostgreSQL	14,15	Not Applicable

\*The listed JDBC drivers are supported under the vendor's supported configurations (OS, JRE, etc.)

## 5.1.7 Document Accessibility

Document Accessibility is built on Output Transformation Server and shares many of its supported platforms.

### 5.1.7.1 Operating Systems

Refer to [Output Transformation Server supported Operating Systems](#).

### 5.1.7.2 Java Virtual Machines

Refer to [Output Transformation Server supported Java Virtual Machines](#).

### 5.1.7.3 Application Servers

Refer to [Output Transformation Server supported Application Servers](#).

#### 5.1.7.4 Databases

Document Accessibility supports the following databases:

Database*	Version	JDBC Driver Supported
Oracle Database Server	19c (12.2.0.3)	Oracle Thin JDBC driver
PostgreSQL	14 and 15	Not Applicable

\* The listed JDBC drivers are supported under the vendor's supported configurations (OS, JRE, etc.). Output Transformation Server's Configuration Manager works with any JDBC 2.0 Type 2, 3, and 4 compliant database drivers. The use of JDBC-ODBC bridge drivers is explicitly not recommended or supported.

## 5.2 OpenText product compatibility

This section provides details about which versions of other OpenText products are compatible with this release of Output Transformation 24.2.



### Note

For the latest compatibility information for OpenText products, refer to the Product Compatibility Matrix.

Product name	Version	Notes
OpenText Directory Server	24.2	OTDS Authentication scheme within Output Transformation Server
OpenText Documentum	24.2	Output Transformation Server Documentum adaptor and Output Transformation for Documentum storage plugin
OpenText InfoArchive	24.2	Output Transformation for InfoArchive and InfoArchive Enterprise Platform
OpenText AppEnhancer	24.2	Output Transformation for AppEnhancer (formerly ApplicationXtender)

## 5.3 Language support

Output Transformation is currently localized in the following languages. Additional languages may be available in future releases.

UI = user interface only

B = both user interface and online help

Component	EN	DE	FR
Output Transformation Server	B		
Output Transformation Server Manager	B		
Document Accessibility	B		
Archive Navigator	B	UI	UI
Alternate Text Manager	B		
Embedded Output Transformation Engine	B		
Embedded Data Transformation Engine	B		
Output Transformation Designer	B		

## 6 Installation and upgrade notes

This section provides additional installation and upgrade information, including related or third-party product information and any required critical patches.

### 6.1 Installation notes

Before you install Output Transformation, review these additional installation notes and verify related product or third-party product requirements.

#### 6.1.1 OpenText Documentum Repository Adaptor

Requires that the following Documentum jar files are placed in the <OUTPUT TRANSFORMATION SERVER HOME>\lib\ext\ directory:

- aspectjrt.jar
- certjFIPPS.jar
- dfc.jar
- jsafeFIPS.jar

#### 6.1.2 IBM Content Manager OnDemand Repository Adaptor

Requires the OnDemand Web Enablement Kit (ODWEK) to be installed and patched up to the version of CMOD that they are interfacing with. In addition, the ODApi.jar from ODWEK must be copied to <OUTPUT TRANSFORMATION SERVER HOME> \lib\ext.

#### 6.1.3 IBM FileNet P8 Loader

The following FileNet P8 jar files are required in the <OUTPUT TRANSFORMATION SERVER HOME> \lib\ext directory:

- <FILENET\_HOME>\ContentEngine\lib\Jace.jar
- <FILENET\_HOME>\ContentEngine\lib\javaapi.jar
- <FILENET\_HOME>\ContentEngine\lib\p8cjares.jar
- <FILENET\_HOME>\CEClient\cdapi\stax-api.jar
- <FILENET\_HOME>\CEClient\cdapi\lxmlScanner.jar
- <FILENET\_HOME>\CEClient\cdapi\lxmlScannerUtils.jar
- <FILENET\_HOME>\ContentEngine\lib\listener.jar

### 6.1.4 IBM FileNet P8 Repository Adaptor

Requires that the following jar files are placed in the <OUTPUT TRANSFORMATION SERVER HOME>\lib\ext directory:

- javaapi.jar
- jace.jar
- jaxrpc.jar (or jaxpc\_p8\_wsi.jar)
- jetty.jar (or jetty\_p8.jar\_wsi.jar)
- saaj.jar (or saaj\_p8\_wsi.jar)
- wasp.jar
- wsdl\_api.jar
- <FILENET\_HOME>\ContentEngine\lib\Jace.jar
- <FILENET\_HOME>\ContentEngine\lib\javaapi.jar
- <FILENET\_HOME>\ContentEngine\lib\p8cjares.jar
- <FILENET\_HOME>\CEClient\cdapi\stax-api.jar
- <FILENET\_HOME>\CEClient\cdapi\lxmlScanner.jar
- <FILENET\_HOME>\CEClient\cdapi\lxmlScannerUtils.jar
- <FILENET\_HOME>\ContentEngine\lib\listener.jar

## 7 Fixed issues

This section provides information about past issues that have been fixed in this release.

### 7.1 Output Transformation Server

#### 7.1.1 Security fixes

Issue name	Issue description
DEV-12232	Security fix for CVE-2023-35116 (BDSA-2023-1491). Jackson-databind component upgraded to version 2.16.1.
DEV-12329	Security fix for CVE-2023-44483, BDSA-2023-2874. Component "Apache Santuario - XML Security for Java" (xmlsec.jar) upgraded to version 2.3.4

DEV-12506	Security fix for CVE-2023-48795(BDSA-2023-3494, BDSA-2023-3523). Component JSch replaced with com.github.mwiede:jsch 0.2.16.
DEV-12714	Security fix for CVE-2024-1597( BDSA-2024-0368). Component Postgres JDBC Driver upgraded to version 42.6.1

### 7.1.2 Other fixes

Issue name	Issue description
DEV-12192	Fixed issue where AELoader was consuming a full text license even when AELoader was not performing a SubmitFullText operation. AELoader will now only consume a full text license when the DocumentOptions->SubmitFullText parameter is set checked (true).
DEV-12322	Fixed issue in Configuration Manager where a solution may not get resynchronized if the base repository is deleted prior to restart.
DEV-12420	Fixed issue where page limit error is triggered in AELoader in some cases when using an index file with multiple indexes per document.
DEV-12570	Fixed typo in log message when FTP Event starts.
DEV-12665	Fixed issue where newly added Locale value may not get saved properly if the connection is extremely slow.
DEV-12687	Reduced number of requests made to backend authentication system when using LDAP authentication scheme.
DEV-12688	Fixed issue where date cannot be selected from date picker when using advanced query.
DEV-12725	Fixed issue in OTS Manager where multiple tokens get generated during login in certain scenarios.
DEV-12794	Fixed issue in ATM when performing bulk deletion and approvals of images.

## 7.2 Output Transformation Designer

Issue name	Issue description
DEV-12279	Fixed issue in Output Transformation Designer where XDoc mappings were lost when using the navigation buttons.

## 7.3 Embedded Output Transformation Engine

### 7.3.1 Security fixes

Issue name	Issue description
DEV-12290	Fixed libcurl CVE-2023-38545 vulnerability by updating to libcurl 8.5.0
DEV-12490	Fixed CVE-2023-46218 vulnerability by using curl lib 8.5.0 for OTE Documentum plugin.

### 7.3.2 Other fixes

Issue name	Issue description
DEV-8738	Enhanced the auto-tagging of Table structures in Document Accessibility to improve the configuration of the heading cell Scope attributes that define heading and data cell relationships.
DEV-10169	Enhanced Document Accessibility to avoid OutOfMemoryErrors when processing PDF files with large page sizes.
DEV-12236	Fixed an issue in the AFP Parser that caused line data overlays to be positioned incorrectly.
DEV-12246	Fixed an issue where Tagged PDFs retrieved from ATM that contain \$VAR# replacement fields would result in words being incorrectly joined together.
DEV-12278	Fixed a positioning issue when using XifOptions.XifVectorOptions.VectorMode=Rasterize to create a single image for non 1-Bit images.
DEV-12283	Resolved an issue in PDF Parser that could cause some CMYK images to be rendered using the wrong color.
DEV-12299	Improved the rendering of PDF patterns to address issues such as whitespace appearing inside tiled shaded areas.
DEV-12306	Fixed spacing issues that could occur in the output PDF file when merging replacement PDFs obtained from Alt Text Manager.
DEV-12348	Enhanced the PCL Generator with new parameter MargingTuning.PclOffsetMode to control the values used for Logical Page offset positions.

DEV-12370	Fixed an issue when loading configuration parameter files that contained ~@ escape function that resulted in the tilde character (~) disappearing.
DEV-12436	Fixed issue in Document Accessibility where the table cell contents in the Document Flow Preview were not fully accessible for screen readers.
DEV-12439	Fixed an issue in the Output Transformation for InfoArchive Audit application to support the newer XXH64 hash algorithm introduced in recent InfoArchive versions.
DEV-12441	Fixed bug where PDF Author property as reported by PDF Preflight was not being fully replicated.
DEV-12480	Fixed an issue that caused page orientations and font sizes in Line Data Parser outputs to be inconsistent if same data was embedded in a larger linedata document.
DEV-12489	Fixed an issue in the Metacode Parser to improve text positioning when using inverse portrait fonts.
DEV-12496	Added support for EnableOverprintMode parameter in Line Data Parser component.
DEV-12507	Fixed an issue that caused JavaScript inside parameter files to not be written out properly using UTF-8 encoding.
DEV-12528	Fixed an issue in PDF Parser that was causing text to be unreadable and appearing in a redacted format.
DEV-12532	Fixed issue in Alternate Text Manager where the inherited language of images could not be resolved.
DEV-12568	Repurposed Orientation Page Setup parameter in Linedata Parser as TextOrientation and added PageOrientation parameter to make the configuration more intuitive for the user.
DEV-12572	Fixed an issue where the Line Data Parser's Control Character filtering would not work as designed.
DEV-12579	Added more informative error message for improper use of replacement of image with tagged PDF via Alternate Text Manager.
DEV-12586	Fixed an issue with table header associations not working in XFT dynamic table header cells.
DEV-12593	Added support for artifacting multiple rows of repeating table headers in XFT.

DEV-12613	Fixed issue in PCL Generator where some characters were printed in the wrong position.
DEV-12622	Fixed an issue where ANSI Carriage Control "Skip to channel 13-15" commands were incorrectly interpreted (only skip to channels 1-12 are valid) in Line Data and AFP Parsers.
DEV-12626	Fixed an issue in the URL Link UI wizard where the tilde (~) function escape character was incorrectly handled.
DEV-12647	Fixed an issue where some XFT table rows did not get detected properly and would not be correctly tagged in PDF/UA output.
DEV-12650	Fixed an ArrayIndexOutOfBoundsException when an image was replaced by a tagged PDF from Alternate Text Manager in Accessible PDF Generator.
DEV-12653	Fixed an issue where the Line Data Parser was producing some blank pages when ControlCharacterReplacementMode was set to Replace and Input uses non-ANSI and non-ASCII encoding.
DEV-12655	Added new Line Data Parser parameter, OnlyChannelOneSkipsToPage, to improve channel skipping behavior for new projects and preserve backward compatibility for existing projects.
DEV-12656	Fixed an issue in the PDF Generator where corrupted PDF files could be created when document breaking was applied to documents that contain transparency features.
DEV-12659	Enhanced the Accessible PDF Generator to ensure all tag properties from ATM replacement PDFs are fully preserved.
DEV-12660	Added support for separation color spaces for 1-Bit images in PDF2PDF transforms.
DEV-12666	Enhanced XFT2 to allow users to control how empty fields are processed. When enabled, empty field results will be provided for all located fields even if they do not contain any data. When disabled, located fields that are empty are ignored. This allows index files that are populated with XFT field values to contain entries for index fields that have no value defined.
DEV-12711	Fixed a bug in getJobVar(String name, String defaultValue) in D2eJobState that would cause the default value to be populated as a job variable key.
DEV-12820	Enhanced the PDF Generator to support one bit images that use image masks.

## 7.4 Document Accessibility

Issue name	Issue description
DEV-11154	Improved the auto-tagging of Table structures when using the default training model in Document Accessibility.
DEV-11934	Improved the auto-tagging of complex nested List structures when using the default training model in Document Accessibility.
DEV-12199	Added support for keyboard navigation in the Document Flow Preview in Document Accessibility.
DEV-12228	Fixed issue in Document Accessibility where users could not use keyboard navigation to upload a document.
DEV-12433	Fixed a NullPointerException in Document Accessibility related to Tag Role mappings when preserving input document tags.
DEV-12453	Added support for asterisk characters (*) as Note Labels when auto-tagging content using the default training model in Document Accessibility.
DEV-12463	Improved accessibility features of the Document Accessibility Table Editor.
DEV-12538	Added support for the text's pattern color space in the PDF Generator.

## 8 Known issues

The following known issues exist in this release.

Issue number	Issue description
DEV-12864	The libcurl 8.5 library contains a number of vulnerabilities (CVE-2024-2004, CVE-2024-2379, CVE-2024-2398, CVE-2024-2466, BDSA-2024-0741, BDSA-2024-0746, BDSA-2024-0747). This vulnerability only affects Output Transformation for Documentum integrations.



## 9 Contact information

OpenText Corporation  
275 Frank Tompa Drive  
Waterloo, Ontario  
Canada, N2L 0A1

For more information, visit the [OpenText](#) or [My Support](#) websites.

© 2024 Open Text

Patents may cover this product, see <https://www.opentext.com/patents>.

### Disclaimer

No Warranties and Limitation of Liability

Every effort has been made to ensure the accuracy of the features and techniques presented in this publication. However, Open Text Corporation and its affiliates accept no responsibility and offer no warranty whether expressed or implied, for the accuracy of this publication.